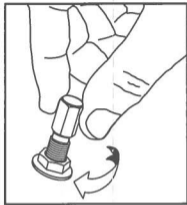
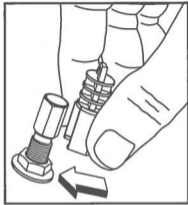


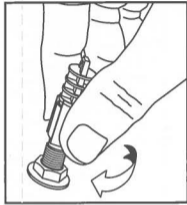
Installation



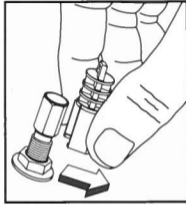
Step 1: Screw the valve cap onto the air valve stem in a clockwise rotation, five full turns.



Step 2: From the side, slide the key completely over the valve cap.



Step 3: Hold (only the key) lightly squeezing on the sides. Turn three full turns in a clockwise rotation. You should feel the key slip over the valve cap. The valve cap is now secure.



Step 4: Remove the key by sliding off from the side. Store the key on your key chain or glove box for future use.



Removal: Repeat step 2 and hold (only the key) squeezing firmly on the sides. Turn, two full turns in a counter clockwise rotation and remove the key. Remove the valve cap by rotating counter clockwise.